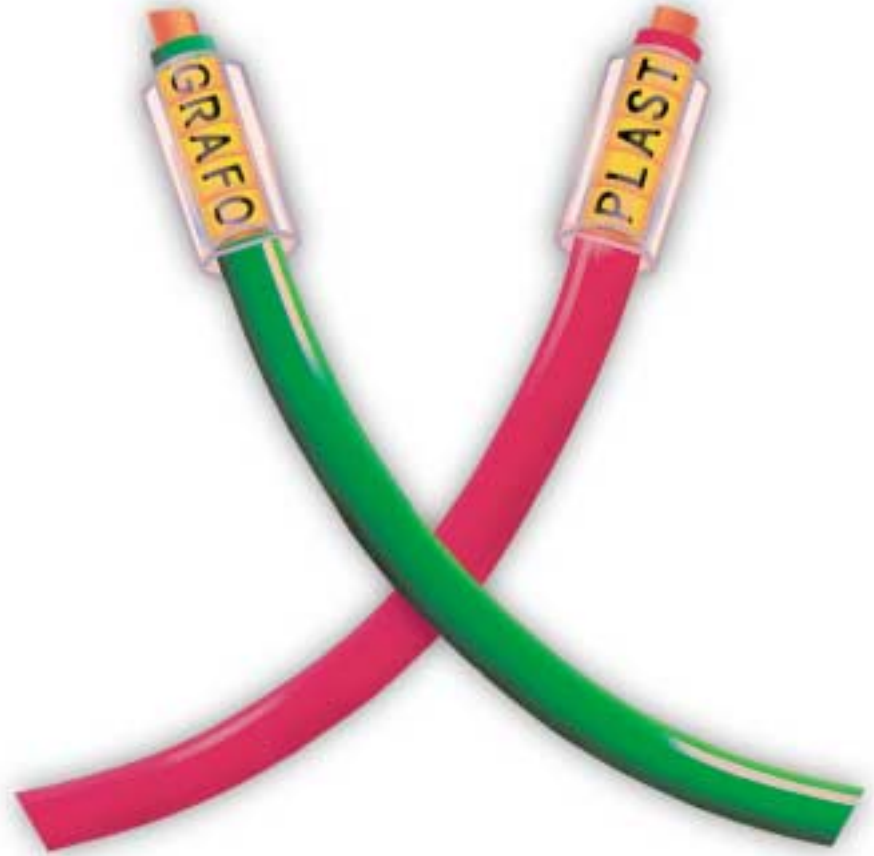




T R A S P

The TRASP system has been designed to provide a complete answer to the problems of electrical instrumentation marking.

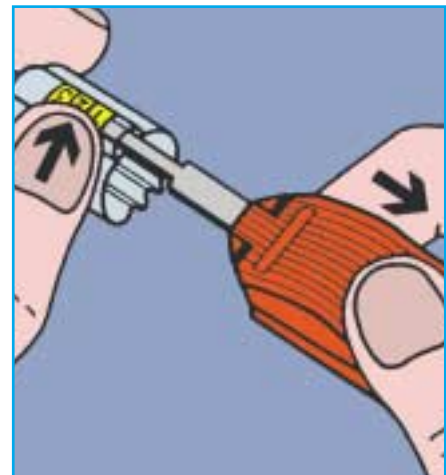
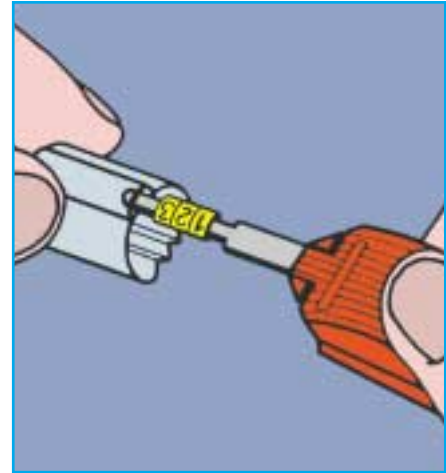
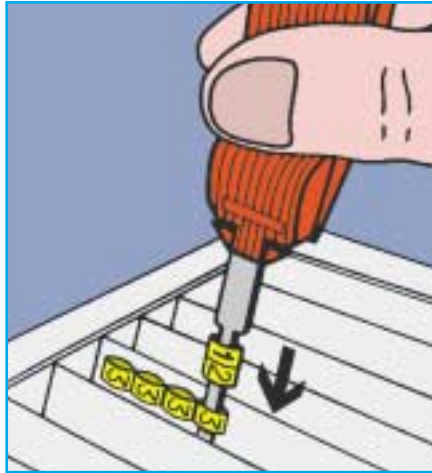


TRASP SYSTEM

Trasp is the only manual system that can identify all types of cable or wire, terminal blocks and electrical equipment in general, including those with surfaces that offer no possibilities for attachment, always using the same procedure and the same coding elements.

It can therefore provide an entire range of identification mark holders able to meet any need that may arise. There is no problem that cannot be solved, always using the same basic components. The hardest part is the choice of the most suitable holder to use on each cable, terminal or other surfaces.

TRASP SYSTEM

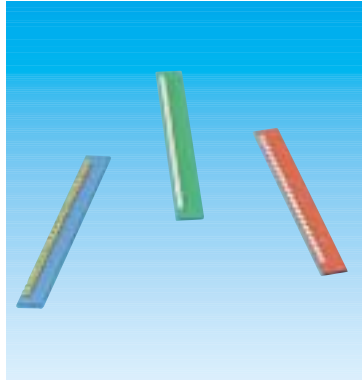


The marking operation

After having inserted the strips into the strip container, the marking tool is used to extract the coding elements. Codes consisting of one or more elements are fully assembled on the marking tool, which is then inserted into the cavity provided in the sleeve or the clip-on. Once the coding elements have been inserted into the upper cavity of the sleeve, slight pressure of the left thumb on the end of the sleeve is sufficient to release the marking tool.

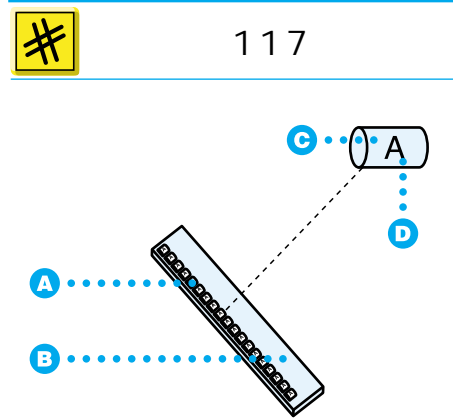
The advantages of the Trasp system:

- Time is saved because a complete identification marker can be assembled quickly and easily
- It is possible to reduce the number of articles kept in stock, thus reducing storage costs.



Alphanumerical strips

The board consists of 24 marked identical elements, glued vertically onto a plastic holder. The available characters include all 26 letters of the alphabet, in both lower-case and upper-case, numbers (from 0 to 9), and 28 symbols, and 11 colours.



	A PVC
	UL-94 Cass V0
	-50 ÷ +80 °C
	Acids+Water+Oils+Powders
	Absence of toxic substances
	TRASP

	117			
		117 /G	mm 3,0	50
		117 /M	mm 2,3	50
		117 /P	mm 1,8	50
		117 G CCOD*	mm 3,0	50
		117 M CCOD*	mm 2,3	50
		117 P CCOD*	mm 1,8	50
pack of 2 sticks				
		BL 117 G	mm 3,0	150
		BL 117 M	mm 2,3	150
		BL 117 P	mm 1,8	150
pack of 15 stripes				
	C	Orange, White, Blue, Yellow, Grey, Brown, Black, Pink, Red, Green, Violet		
	D	Black, Red, White, Not printed		
*CCOD = each pack contains 10 strips of different colours with elements from 0 to 9				

LEGEND

Standard characters: White background - printing Black, yellow background - printing Black, coloured background with or without printing (international code).

ALPHANUMERICAL STRIPS

117					
	LARGE (mm 3.0) = G				
	MEDIUM (mm 2.3) = M				
	SMALL (mm 1.8) = P				
		A = AA, a = 0A, + = 10, - = 11, ÷ = 12, % = 13, & = 14, * = 15, ^ = 16, & = 17, ~ = 18, Ω = 19, ° = 20, * = 21, (= 22,) = 23, , = 24, ° = 25, < = 26, > = 27, = 28, Ø = 29, € = 30, Σ = 31, ∙ = 32, ∴ = 33, ∵ = 34, ∶ = 35, ∷ = 36, ∸ = 37, ∺ = 38			
		B = BB, b = 0B, C = CC, c = 0C, D = DD, d = 0D, E = EE, e = 0E, F = FF, f = 0F, G = GG, g = 0G, H = HH, h = 0H, I = II, i = 0I, J = JJ, j = 0J, K = KK, k = 0K, L = LL, l = 0L, M = MM, m = 0M, N = NN, n = 0N, O = OO, o = 0O, P = PP, p = 0P, Q = QQ, q = 0Q, R = RR, r = 0R, S = SS, s = 0S, T = TT, t = 0T, U = UU, u = 0U, V = VV, v = 0V, W = WW, w = 0W, X = XX, x = 0X, Y = YY, y = 0Y, Z = ZZ, z = 0Z			
		BLACK = B, RED = R, WHITE = W, = 9			
		BLACK = B, GREY = E, GREEN = G, BROWN = N, ORANGE = O, PINK = P, RED = R, BLUE = U, VIOLET = V, WHITE = W, YELLOW = Y			
		= 99			

INTERNATIONAL CODE			
	LARGE	MEDIUM	SMALL
0	117G 00 WB	117M 00 WB	117P 00 WB
1	117G 01 WN	117M 01 WN	117P 01 WN
2	117G 02 WR	117M 02 WR	117P 02 WR
3	117G 03 BO	117M 03 BO	117P 03 BO
4	117G 04 BY	117M 04 BY	117P 04 BY
5	117G 05 WG	117M 05 WG	117P 05 WG
6	117G 06 WU	117M 06 WU	117P 06 WU
7	117G 07 WV	117M 07 WV	117P 07 WV
8	117G 08 WE	117M 08 WE	117P 08 WE
9	117G 09 BW	117M 09 BW	117P 09 BW

Articles 117, printed in black on a white or yellow background are already in stock. For other requests check availability with your closest regional office.



#	118	119			
#	119M	120			
#	●	⬆	🎨	↻	📦
118	ABS	mm 147x190x18	Black	TRASP	1
119 /15U	Al	A 15	Metal	TRASP	5
119 /30U	Al	A 30	Metal	TRASP	5
119 M /15	Al/PP	A 15	Orange	TRASP	1
119 M /30	Al/PP	A 30	Orange	TRASP	1
BL 119M/15U	Al/PP	A 15	Orange	TRASP	6
120	Al		Metal	TRASP	5

Strip container

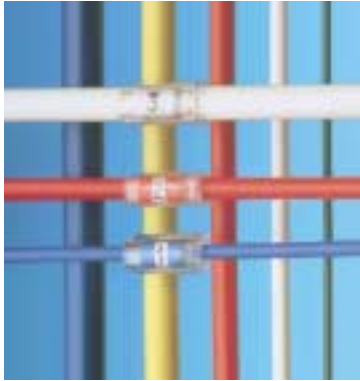
The strip container or tray, made of a plastic material, is the support into which the strips are inserted, and is absolutely indispensable for correct use of the TRASP system. The slots in the strip container are angled in such a way as to make lateral extraction of the elements from the strip extremely easy. The strip container holds 25 strips of any type of character (letters, numbers, symbols, or colours) as required.

Marking tool

The marking tool is an essential tool for removing elements from the strip and inserting them into the selected marker holder.

Hook

The hook permits rapid removal of elements inserted into the marker cavity.



#	101 ÷ 116

	mm 10 ÷ 15 ÷ 23 ÷ 30 ÷ 500 ÷ 25.000
	PVC
	UL-94 Class V0
	-50 ÷ +80 °C
	Acids ÷ Water ÷ Oils ÷ Powders
	Transparent
	TRASP, PLOTTER SYSTEM

#	Ø	
101 /10	mm 1 ÷ 2	1.000
101 /15		1.000
101 /23		1.000
101 /30		500
101 /MT		1x25 m
102 /10	mm 2 ÷ 3	1.000
102 /15		1.000
102 /23		1.000
102 /30		500
102 /MT		1x25 m
103 /10	mm 3 ÷ 4	1.000
103 /15		1.000
103 /23		500
103 /30		500
103 /MT		1x25 m
104 /10	mm 4 ÷ 5	1.000
104 /15		1.000
104 /23		500
104 /30		500
104 /MT		1x25 m
105 /10	mm 5 ÷ 6	1.000
105 /15		1.000
105 /23		500
105 /30		500
105 /MT		1x25 m
106 /10	mm 6 ÷ 7	500
106 /15		500
106 /23		200
106 /30		200
106 /MT		1x25 m
107 /10	mm 7 ÷ 8	500
107 /15		500
107 /23		200
107 /30		200
107 /MT		1x25 m
108 /10	mm 8 ÷ 10	500
108 /15		500
108 /23		200
108 /30		200
108 /MT		1x25 m
109 /10	mm 10 ÷ 12	500
109 /15		500
109 /23		200
109 /30		200
109 /MT		40x0,5 m
110 /10	mm 12 ÷ 14	500
110 /15		500
110 /23		200
110 /30		200
110 /MT		40x0,5 m
111 /10	mm 14 ÷ 16	200
111 /15		200
111 /23		200
111 /30		100
111 /MT		40x0,5 m
112 /10	mm 16 ÷ 18	200
112 /15		200
112 /23		100
112 /30		100
112 /MT		40x0,5 m
113 /10	mm 18 ÷ 20	200
113 /15		200
113 /23		100
113 /30		100
113 /MT		40x0,5 m
114 /10	mm 20 ÷ 22	100
114 /15		100
114 /23		100
114 /30		50
114 /MT		20x0,5 m
115 /10	mm 22 ÷ 25	100
115 /15		100
115 /23		50
115 /30		50
115 /MT		20x0,5 m
116 /10	mm 25 ÷ 30	50
116 /15		50
116 /23		50
116 /30		50
116 /MT		20x0,5 m

Transparent sleeve Series 100

The sleeve can be slipped over a cable more quickly than any other type of holder, and for this reason it is also the most widely used. It consists of a length of self-extinguishing transparent plastic material and contains two cavities. One covers the cable and the other holds the identifying marker. The chemical characteristics of the material make this product resistant to water, oils, powders and acids, and at the same time protects the elements from any contamination.

LEGEND

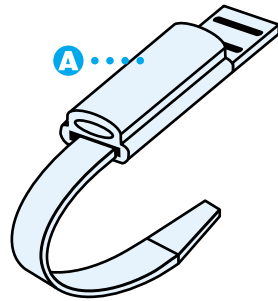


Comparative table of diameters



#	121-122-123 121X-122X	#				
		121 /10	AL/PVC	mm 10	mm 10 + 50	200
		121 /15	AL/PVC	mm 15	mm 10 + 50	200
		121 /23	AL/PVC	mm 23	mm 10 + 50	200
		121 /30	AL/PVC	mm 30	mm 10 + 50	200
		121X	AI	without sleeve	mm 10 + 50	200
		121X /10	AI/PVC	mm 10	mm 10 + 50	200
		121X /15	AI/PVC	mm 15	mm 10 + 50	200
		121X /23	AI/PVC	mm 23	mm 10 + 50	200
		121X /30	AI/PVC	mm 30	mm 10 + 50	200
		122 /10	AL/PVC	mm 10	mm 10 + 65	100
		122 /15	AL/PVC	mm 15	mm 10 + 65	100
		122 /23	AL/PVC	mm 23	mm 10 + 65	100
		122 /30	AL/PVC	mm 30	mm 10 + 65	100
		122X	AI	without sleeve	mm 10 + 65	100
		122X /10	AI/PVC	mm 10	mm 10 + 65	100
		122X /15	AI/PVC	mm 15	mm 10 + 65	100
		122X /23	AI/PVC	mm 23	mm 10 + 65	100
		122X /30	AI/PVC	mm 30	mm 10 + 65	100
		123	AL	without sleeve	mm 10 +100	100

	UL-94 Class V0
	-50 ÷ +80 °C
	Acids+Water+Oils+Powders
	Metal / Transparent
	TRASP, PLOTTER SYSTEM



Aluminium and stainless steel strap

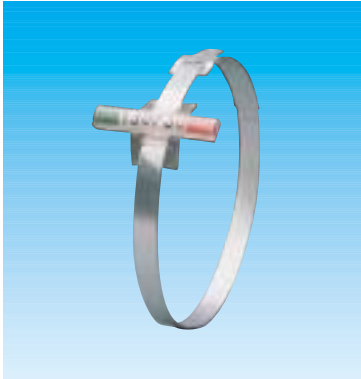
A strap that can be marked is the ideal solution for marking bundles of cables or particularly thick cables.

The strap (art. 121) can mark cables up to a diameter of 50 mm and is fitted with a sleeve to hold the marking elements (length 10/15/23/30 mm).

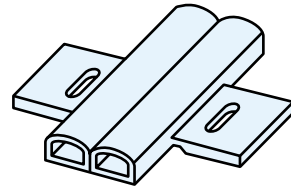
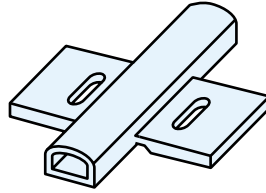
The strap (art. 122) is similar to art. 121, varying only in the length. This article can mark cables up to a maximum of 65 mm diameter.

The aluminium strap (art. 123) is 400 mm long and is not fitted with a sleeve.

The stainless steel straps (art. 121X and 122X) are also supplied without a sleeve.



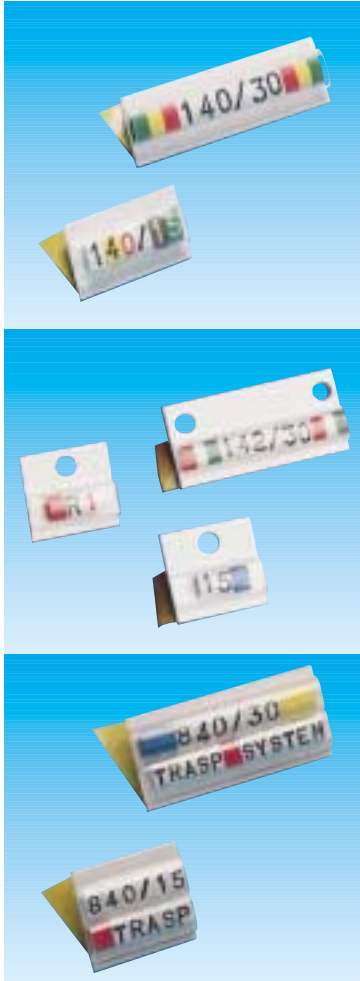
#	130	830
---	-----	-----



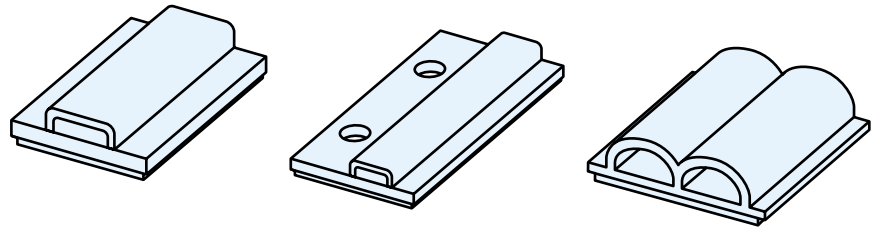
PVC	#	mm 23	200
UL-94 Class V0	130 /23	mm 30	200
-50 ÷ +80 °C	130 /30	mm 30	200
Acids ÷ Water ÷ Oils ÷ Powders	830 /30		
Transparent			
TRASP, PLOTTER SYSTEM			










Longitudinal sleeve for cable tie

If a longitudinal sleeve is used on a normal cable tie or strap the marker lies parallel to the cables.



	140	142	840
---	-----	-----	-----



	PVC/ACR			
	UL-94 Class V0	140 / 10	mm 10	500
		140 / 15	mm 15	500
	-50 ÷ +80°C	140 / 23	mm 23	200
		140 / 30	mm 30	200
	Acids ÷ Water ÷ Oils ÷ Powders	140 / MT	mm 500	20
		142 / 15	mm 15	500
	Transparent/White	142 / 30	mm 30	200
		840 / 10	mm 10	200
	TRASP, PLOTTER SYSTEM	840 / 15	mm 15	200
		840 / 23	mm 23	100
		840 / 30	mm 30	100
		840 / MT	mm 500	20

LEGEND

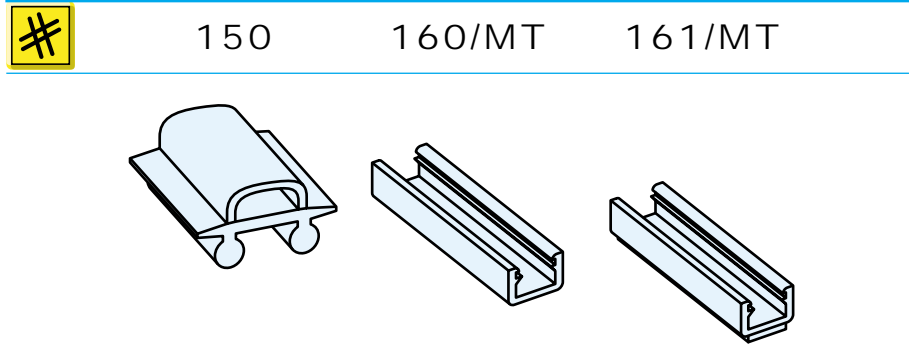
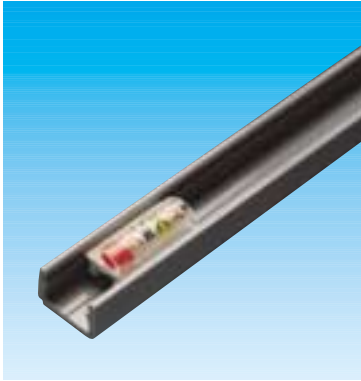
Self-sticking tag

The self-sticking tag solves the problems of marking all surfaces that offer no other possibilities for attachment.

The marker cavity is of soft transparent PVC and the holder has an adhesive base protected by a removable skin. Another marker (art. 142) is provided with holes in addition to the adhesive backing, so that it can also be attached by screws or rivets.

Dual self-sticking tag

Protected and long-lasting two-lined markings can be applied using a dual-cavity tag. This is easily attached to all those components that offer no possibility for mechanical attachment.



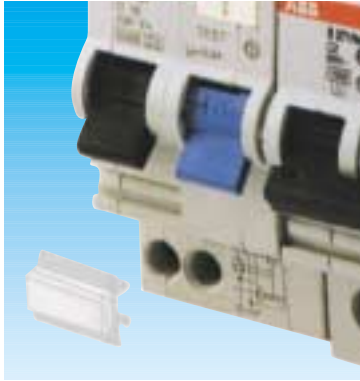
	#					
UL-94 Class V0	#					
-50 ÷ +80 °C	150 / 10	PVC	mm 10	Transparent/Grey	500	
	150 / 15	PVC	mm 15	Transparent/Grey	500	
Acids+Water+Oils+Powders	150 / 23	PVC	mm 23	Transparent/Grey	200	
	150 / 30	PVC	mm 30	Transparent/Grey	200	
TRASP, PLOTTER SYSTEM	160 / MT	PVC	mm 500	Grey	20	
	161 / MT	PVC/ACR	mm 500	Grey	20	
	161 / MT1	PVC/ACR	mm 1000	Grey	10	

Marking tag

A duct tag is inserted in the duct by simple pressure.

Duct

The ducts are either attached by screws (art. 160/MT) or self-sticking (art. 161/MT), and are designed to hold the specific TRASP system tags (art. 150) and SI 2000 system tags (art. SIHF44...).



#	152	#			
		152I /150	Finder/Lumberg	mm 15	200
		152I /250	Finder/Lumberg	mm 25	200
		152N /170	ABB	mm 17	200
		152N /340	ABB	mm 34	100
	PVC				
	UL-94 Class V0				
	-50 ÷ +80 °C				
	Acids ÷ Water ÷ Oils ÷ Powders				
	Transparent / White				
	TRASP, PLOTTER SYSTEM				

LEGEND

Clip-on for automatic circuit-breakers

The clip-on for circuit breakers makes it possible to mark Finder and ABB equipment in an efficient and long-lasting manner.



#	155÷159	#			
		155A /050	Cabur	mm 5	1.000
		155A /060	Cabur	mm 6	1.000
		155A /070	Cabur	mm 7	1.000
		155D /050	Legrand Viking 1. Serie	mm 5	1.000
		155D /060	Legrand Viking 1. Serie	mm 6	1.000
		155E /060	Phoenix C.	mm 6	1.000
		155G /050	Siemens	mm 5	1.000
		155L /050	Weidmüller	mm 5	1.000
		155L /055	Weidmüller	mm 5,5	1.000
		156A /075	Cabur	mm 7,5	1.000
	156A /077	Cabur	mm 7,7	1.000	
	156A /090	Cabur	mm 9	1.000	
	156D /080	Legrand	mm 8	1.000	
	156E /080	Phoenix C.	mm 8	1.000	
	156L /080	Weidmüller	mm 8	1.000	
	156L /090	Weidmüller	mm 9	1.000	
	PVC	157A /150	Cabur	mm 15	500
	UL-94 Class V0	157G /150	Siemens	mm 15	500
	-50 ÷ +80°C	157L /150	Weidmüller	mm 15	500
	Acids ÷ Water ÷ Oils ÷ Powders	158E /200	Phoenix C.	mm 20	200
	Transparent / White	158G /200	Siemens	mm 20	200
	TRASP	159G /250	Siemens	mm 25	200

Clip-on for T-blocks

The part of this clip-on that snaps over the terminal is made of stiff and elastic PVC, while the sleeve that holds the marker is made of soft, transparent PVC.

This system facilitates identification of the commonest makes of T-blocks, using the basic components of the TRASP system.



#	175	#			
		175 A/15	Cabur	mm 15	200
		175 C/15	Entrelec	mm 15	200
		175 D/15	Legrand Viking 1. Serie	mm 15	200
		175 E/15	Phoenix C. - Ilme	mm 15	200
		175 G/15	Siemens	mm 15	200
		175 H/15	Allen Bradley - Woertz	mm 15	200
		175 L/15	Weidmuller: SAK, WDU	mm 15	200
		175 M/15*	Sprecher+Sch. - Telemecan. - Wieland	mm 15	200
	PC				
	UL-94 Class V0				
	-50 ÷ +80 °C				
	Acids ÷ Water ÷ Oils ÷ Powders				
	Absence of toxic substances				
	Transparent				
	TRASP				

LEGEND

Vertical clip-on
for T-blocks

The vertical polycarbonate clip-on, permits longer and more visible identification to be placed on the T-blocks.

* Also suitable for Télémécanique LA1KN22 and CA2KN22 contactors

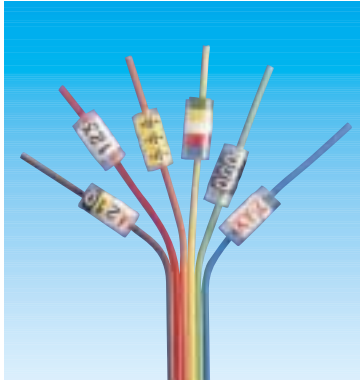


#	185	#			
		185 G/20	Siemens Knöckner-Möller	mm 20	200
		185 M/20	Télémécanique*	mm 20	200
	PC				
	UL-94 Class V0				
	-50 ÷ +80°C				
	Acids ÷ Water ÷ Oils ÷ Powders				
	Absence of toxic substances				
	Transparent				
	TRASP				

Clip-on for contactors

The polycarbonate clip-on permits the rapid, clear and long-lasting marking of contactors using the basic components of the TRASP system.

* Not suitable for Télémécanique LA1KN22 and CA2KN22 contactors



#	190	#		
		190 / 10	mm 10	1.000
		190 / 15	mm 15	1.000
		190 / MT	mm 25.000	1 x 25m
	mm 0,6 ÷ 1,2			
	PVC			
	UL-94 Class V0			
	-50 ÷ +80°C			
	Acids ÷ Water ÷ Oils ÷ Powders			
	Transparent			
	TRASP, PLOTTER SYSTEM			
		Any size on request		

LEGEND

Transparent sleeve for electronic apparatus

With this sleeve it is extremely easy to mark electronic apparatus wiring in a clear and legible manner, using Trasp or SI2000 elements.



#	201 ÷ 209	#	Ø	Gift
		201 /10	mm 1,5 ÷ 2,5	1.000
		201 /15		1.000
		201 /23		1.000
		201 /30		500
		201 /MT		1x25 m
		202 /10	mm 2 ÷ 4	1.000
		202 /15		1.000
		202 /23		500
		202 /30		500
		202 /MT		1x25 m
mm 10 ÷ 15 ÷ 23 ÷ 30 ÷ 500 ÷ 25.000		203 /10	mm 4 ÷ 7	500
PVC		203 /15		500
UL-94 Class V0		203 /23		500
-50 ÷ +80°C		203 /30		200
Acids ÷ Water ÷ Oils ÷ Powders		203 /MT		1x25 m
Transparent		204 /10	mm 6 ÷ 10	500
TRASP, PLOTTER SYSTEM		204 /15		500
		204 /23		200
		204 /30		200
		204 /MT		1x25 m
		205 /10	mm 10 ÷ 14	200
		205 /15		200
		205 /23		200
		205 /30		200
		205 /MT		40x0,5 m
		206 /10	mm 14 ÷ 22	200
		206 /15		200
		206 /23		100
		206 /30		100
		206 /MT		40x0,5 m
		207 /10	mm 22 ÷ 30	50
		207 /15		50
		207 /23		50
		207 /30		50
		207 /MT		20x0,5 m
		208 /10	mm 30 ÷ 35	50
		208 /15		50
		208 /23		50
		208 /30		50
		208 /MT		20x0,5 m
		209 /10	mm 35 ÷ 40	50
		209 /15		50
		209 /23		50
		209 /30		50
		209 /MT		20x0,5 m

Transparent sleeve Series 200

Thanks to the characteristic shape that renders it more elastic, this sleeve can cover an enormous range of cables with a few range of articles, thus appreciably reducing warehouse stocks.



#	710-711		#				
	710 / 05	mm ² 0,5	mm 9	Orange	200		
	710 / 07	mm ² 0,75	mm 9	Neutral	200		
	710 / 10	mm ² 1,0	mm 9	Yellow	200		
	710 / 15	mm ² 1,5	mm 9	Red	200		
	710 / 25	mm ² 2,5	mm 12	Blue	200		
	710 / 40	mm ² 4	mm 12	Grey	100		
	710 / 60	mm ² 6	mm 12	Green	100		
	710 / 100	mm ² 10	mm 12	Brown	100		
	A PVC	B E - CU					
	UL-94 Class V0						
	-50 ÷ +80°C						
	Acids ÷ Water ÷ Oils ÷ Powders						
	A Transparent/Coloured						
	TRASP, PLOTTER SYSTEM						

SPARK pin terminal

SPARK is a crimpable pin terminal fitted with a swivelling marker sleeve that can be turned in order to read the markings more easily, especially in PLC boxes where space is limited.

SPARK offers the advantage of a combined cable-end connector and marker sleeve, with a consequent saving in warehouse stocks and increased speed of application.



SPARK ring terminal and spade terminal

#	720	730	#				
			720 /R3	0,25 ÷ 1	mm 3	200	Red
			720 /R4		mm 4	200	
			720 /R5		mm 5	100	
			720 /R6		mm 6	100	
			720 /B3	1 ÷ 2,5	mm 3	200	Blue
			720 /B4		mm 4	200	
			720 /B5		mm 5	100	
			720 /B8		mm 8	100	
	A PC	C CU	720 /Y4	2,5 ÷ 6	mm 4	100	Yellow
	B		720 /Y5		mm 5	100	
	UL-94 Class V0		720 /Y6		mm 6	100	
	-50 ÷ +80 °C		730 /R3	0,25 ÷ 1	mm 3	200	Red
	Acids ÷ Water ÷ Oils ÷ Powders		730 /R4		mm 4	200	
	A Transparent		730 /R5		mm 5	100	
	TRASP, PLOTTER SYSTEM		730 /B3	1 ÷ 2,5	mm 3	200	Blue
			730 /B4		mm 4	200	
			730 /B5		mm 5	100	
			730 /B6		mm 6	100	
			730 /Y4	2,5 ÷ 6	mm 4	100	Yellow
			730 /Y5		mm 5	100	
			730 /Y6		mm 6	100	

The SPARK versions with ring or spade terminal attachments make it possible to mark the cable and prepare it for attachment in one single operation, thus saving time and giving a better finish to the job.



SPARK tools

#	
780	1

Wire Stripper

This tool strips the insulating sheath from the wires to prepare them for SPARK crimping.

#		
770	710/711	1
772	710/711	1
774	710/711	1
790	720/730	1

Crimping tool

These are pliers for attaching the SPARK terminals to the wires. Article 774 includes a ratchet that makes the work less tiring for the operator.

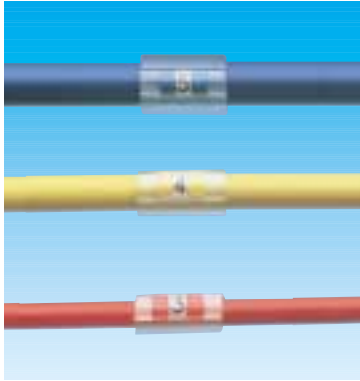
TRASP SYSTEM



#	802	808 ÷ 811	#	∅	
			802 /15	mm 2 ÷ 4	500
			802 /30		200
			802 /MT		1 x 25 m
			808 /10	mm 8 ÷ 10	100
			808 /15		100
			808 /23		50
			808 /30		50
			808 /MT		40 x 0,5 m
	mm 15 ÷ 23 ÷ 30 ÷ 500 ÷ 25.000		809 /10	mm 10 ÷ 12	100
	PVC		809 /15		100
	UL-94 Class V0		809 /23		50
	-50 ÷ +80°C		809 /30		50
	Acids ÷ Water ÷ Oils ÷ Powders		809 /MT		40 x 0,5 m
	Transparent		810 /10	mm 12 ÷ 14	100
	TRASP, PLOTTER SYSTEM		810 /15		100
			810 /23		50
			810 /30		50
			810 /MT		40 x 0,5 m
			811 /10	mm 14 ÷ 16	50
			811 /15		50
			811 /23		20
			811 /30		20
			811 /MT		40 x 0,5 m

Dual recessed sleeve

The dual recessed sleeve makes it possible to mark a cable rapidly and accurately with the identification marks set out in two rows and can be used for source/destination marking. Article 802 makes it possible to read clearly the markings on opposing cables having a diameter of up to 4 mm. For diameters larger than this the cables must be placed in parallel.



#	900HF	930HF	#	Ø	📦
			901HF /10	mm 0,9 ÷ 1,6	1.000
			901HF /15		1.000
			901HF /23		500
			901HF /30		500
			902HF /10	mm 1,4 ÷ 5	1.000
			902HF /15		1.000
			902HF /23		500
			902HF /30		500
			903HF /10	mm 5 ÷ 11	500
			903HF /15		500
			903HF /23		200
			903HF /30		200
			930HF /30		200
⚠️	mm 10 ÷ 15 ÷ 23 ÷ 30				
●	PT (# 900HF)	PE (# 903HF)			
🌡️	-40 ÷ +80 °C				
⚠️	Acids ÷ Water ÷ Oils ÷ Powders				
🎬	Transparent				
🚧	TRASP, PLOTTER SYSTEM				

LEGEND

Halogen-free sleeve

This sleeve does not release halogenous substances if burned, and is therefore used in high-risk installations.

Halogen-free sleeve for straps

This is the simplest solution for marking cables bundled in a cable-tie.



#	⚠️	🚧	📦
	mm		
005 RK	470x170x50		1
006	145x25	100 / 200 / 300 / 900	50

Ready Kit

Ready Kit is a practical container for transporting 700 ready-made sleeves, stored in 50 portable mountings (#006), to the place of application.

TRASP SYSTEM



Starter Kit

These introductory kits for the TRASP system offer five different assortments of articles.

#	001SK/01		001SK/02		001SK/03		001SK/04		001SK/08	
012 A	1	012 A	1	013 A	1	013 A	1	012 A	1	
117G00BW	10	117M00BW	10	117M00BW	10	117M00BY	10	117G00BY	10	
117G01BW	10	117M01BW	10	117M01BW	10	117M01BY	10	117G01BY	10	
117G02BW	10	117M02BW	10	117M02BW	10	117M02BY	10	117G02BY	10	
117G03BW	10	117M03BW	10	117M03BW	10	117M03BY	10	117G03BY	10	
117G04BW	10	117M04BW	10	117M04BW	10	117M04BY	10	117G04BY	10	
117G05BW	10	117M05BW	10	117M05BW	10	117M05BY	10	117G05BY	10	
117G06BW	10	117M06BW	10	117M06BW	10	117M06BY	10	117G06BY	10	
117G07BW	10	117M07BW	10	117M07BW	10	117M07BY	10	117G07BY	10	
117G08BW	10	117M08BW	10	117M08BW	10	117M08BY	10	117G08BY	10	
117G09BW	10	117M09BW	10	117M09BW	10	117M09BY	10	117G09BY	10	
117GAABW	10	117MAABW	10	117MAABW	10	117MAABY	10	117GAABY	10	
117GBBBW	10	117MBBBW	10	117MBBBW	10	117MBBBY	10	117GBBBY	10	
117GCCBW	10	117MCCBW	10	117MCCBW	10	117MCCBY	10	117GCCBY	10	
117GDDBW	10	117MDDBW	10	117MDDBW	10	117MDDBY	10	117GDDBY	10	
117GEEBW	10	117MEEBW	10	117MEEBW	10	117MEEBY	10	117GEEBY	10	
117GFFBW	10	117MFFBW	10	117MFFBW	10	117MFFBY	10	117GFFBY	10	
117GGGBW	10	117MGGBW	10	117MGGBW	10	117MGGBY	10	117GGGBY	10	
117GHHBW	10	117MHHBW	10	117MHHBW	10	117MHHBY	10	117GHHBY	10	
117GIIBW	10	117MIIBW	10	117MIIBW	10	117MIIBY	10	117GIIBY	10	
117GJJBW	10	117MJJBW	10	117MJJBW	10	117MJJBY	10	117GJJBY	10	
117GKKBW	10	117MKKBW	10	117MKKBW	10	117MKKBY	10	117GKKBY	10	
117GLLBW	10	117MLLBW	10	117MLLBW	10	117MLLBY	10	117GLLBY	10	
117GMMBW	10	117MMMBW	10	117MMMBW	10	117MMMBY	10	117GMMBY	10	
117GNNBW	10	117MNNBW	10	117MNNBW	10	117MNNBY	10	117GNNBY	10	
117GPPBW	10	117MPPBW	10	117MPPBW	10	117MPPBY	10	117GPPBY	10	
117GQQBW	10	117MQQBW	10	117MQQBW	10	117MQQBY	10	117GQQBY	10	
117GRRBW	10	117MRRBW	10	117MRRBW	10	117MRRBY	10	117GRRBY	10	
117GSSBW	10	117MSSBW	10	117MSSBW	10	117MSSBY	10	117GSSBY	10	
117GTTBW	10	117MTTBW	10	117MTTBW	10	117MTTBY	10	117GTTBY	10	
117GUUBW	10	117MUUBW	10	117MUUBW	10	117MUUBY	10	117GUUBY	10	
117GVVBW	10	117MVVBW	10	117MVVBW	10	117MVVBY	10	117GVVBY	10	
117GWWBW	10	117MWWBW	10	117MWWBW	10	117MWWBY	10	117GWWBY	10	
117GXXBW	10	117MXXBW	10	117MXXBW	10	117MXXBY	10	117GXXBY	10	
117GYYSBW	10	117MYYSBW	10	117MYYSBW	10	117MYYSBY	10	117GYYSBY	10	
117GZZBW	10	117MZZBW	10	117MZZBW	10	117MZZBY	10	117GZZBY	10	
117G10BW	10	117M10BW	10	117M10BW	10	117M10BY	10	117G10BY	10	
117G11BW	10	117M11BW	10	117M11BW	10	117M11BY	10	117G11BY	10	
117G12BW	10	117M12BW	10	117M12BW	10	117M12BY	10	117G12BY	10	
117G13BW	10	117M13BW	10	117M13BW	10	117M13BY	10	117G13BY	10	
117GOOBW	10	117MOOBW	10	117MOOBW	10	117MOOBY	10	117GOOBY	10	
117G999B	10	117M999B	10	117M999B	10	117M999B	10	117G999B	10	
117G999R	10	117M999R	10	117M999R	10	117M999R	10	117G999R	10	
117G999G	10	117M999G	10	117M999G	10	117M999G	10	117G999G	10	
117G999Y	10	117M999Y	10	117M999Y	10	117M999Y	10	117G999Y	10	
117G999U	10	117M999U	10	117M999U	10	117M999U	10	117G999U	10	
202/15	1.000	202/15	1.000	102/15	1.000	102/15	1.000	202/15	1.000	
Sample		Sample		Sample		Sample		Sample		
T-Shirt	1	T-Shirt	1					T-Shirt	1	

#	mm	1
001SK	280x320x170	1



Micro Kit

Available in two versions, this is the smallest portable kit for transporting the tools needed for marking with the TRASP system.

#	003A		003C /01		003C /02	
	118	1	118	1	118	1
	119M/15U	1	119M/15U	1	119M/15U	1
			117M00BW	1	117M00BW	1
			117M01BW	1	117M01BW	1
			117M02BW	1	117M02BW	1
			117M03BW	1	117M03BW	1
			117M04BW	1	117M04BW	1
			117M05BW	1	117M05BW	1
			117M06BW	1	117M06BW	1
			117M07BW	1	117M07BW	1
			117M08BW	1	117M08BW	1
			117M09BW	1	117M09BW	1
			117MAABW	1	117MAABW	1
			117MBBBW	1	117MBBBW	1
			117MCCBW	1	117MCCBW	1
			117MEEBW	1	117MEEBW	1
			117MLLBW	1	117MLLBW	1
			117MNNBW	1	117MNNBW	1
			117MRRBW	1	117MRRBW	1
			117MSSBW	1	117MSSBW	1
			117MTTBW	1	117MTTBW	1
			117MVVBW	1	117MVVBW	1
			117M10BW	1	117M10BW	1
			117M11BW	1	117M11BW	1
			117M13BW	1	117M13BW	1
			117M999W	1	117M999W	1
			117M999R	1	117M999R	1
			103/15	50	103/15	50
			108/15	20	108/15	20
			130/23	50	130/23	50
			140/15	50	140/15	50
			301/15	50	301/15	50
			302/15	50	302/15	50
			710/15	50	710/15	50
			720/B5	20	710/25	20
			730/R4	20	730/R4	20
					UN 2I	2

#	mm	
003...	170x210x75	1

LEGEND



Trasp Box

This is a convenient box for storing and transporting two kits of useful articles for marking with the TRASP system.

A bracket is provided for attaching it to a wall.

#	012A		012C/01		012C/03		013A	
	118	1	118	1	118	1	118	2
	119/15U	1	119/15U	1	119/15U	1	119/15U	1
	119/30U	1	119/30U	1	119/30U	1	119/30U	1
	120	1	120	1	120	1	120	1
			117G00BW	1	117M00BW	3		
			117G01BW	1	117M01BW	3		
			117G02BW	1	117M02BW	3		
			117G11BW	1	117M03BW	2		
			117G03BO	1	117M04BW	2		
			117G999O	1	117M05BW	1		
			117G999R	1	117M06BW	1		
			117GAARW	1	117M07BW	1		
			117GEERW	1	117M08BW	1		
			117GSSRW	1	117M09BW	1		
			117M01WN	1	117M10BW	1		
			117M02WR	1	117M11BW	1		
			117M03BW	1	117M13BW	1		
			117M04BW	1	117MAABW	1		
			117M05BW	1	117MBBBW	1		
			117M10BW	1	117MCCBW	1		
			117M999G	1	117MDDBW	1		
			117M999W	1	101/15	70		
			117MCCBY	1	101/30	25		
			117MTTBY	1	102/15	70		
			117MVBVBY	1	102/30	30		
			117P06BW	1	103/15	60		
			117P07BW	1	103/30	30		
			117P08BW	1	104/15	60		
			117P13BW	1	104/30	30		
			130/23	5	140/15	1		
			130/30	5	140/30	1		
			140/15	10	142/15	1		
			175D/15	3	142/30	1		
			175E/15	3	175L/15	3		
			175L/15	3	301/15	10		
			185G/20	3	302/15	10		
			185M/20	3	303/30	5		
			190/10	30	304/30	5		
			190/15	30	840/15	1		
			202/15	100	840/30	1		
			301/15	5				
			302/15	5				
			303/30	5				
			304/30	5				
			710/15	40				
			710/60	20				
			808/15	30				
			830/30	5				
			840/23	10				

	mm	
012/013	234x180x90	1



Trasp Case

Available in three versions, this case has been designed to hold several different assortments of TRASP system articles.

#	050A	050C/01	050C/03	050C/04	
118	2	118	2	118	2
119M/15U	1	119M/15U	1	119M/15U	1
119M/30U	1	119M/30U	1	119M/30U	1
120	1	120	1	120	1
		117G00BW	2	117M00BW	4
		117G01BW	2	117M01BW	4
		117G02BW	2	117M02BW	4
		117G03BW	2	117M03BW	2
		117G11BW	2	117M04BW	2
		117G999O	2	117M05BW	2
		117G999R	2	117M06BW	2
		117GAARW	2	117M07BW	2
		117GEERW	2	117M08BW	2
		117GSSRW	2	117M09BW	2
		117M01WN	2	117MAABW	2
		117M02WR	2	117MBBBW	2
		117M03BW	2	117MCCBW	2
		117M04BW	2	117MDDBW	2
		117M05BW	2	117MEEBW	2
		117M10BW	2	117MFFBW	2
		117M999G	2	117MGGBW	2
		117M999W	2	117MHBBW	2
		117MCCBY	2	117MIIBW	2
		117MTTBY	2	117MJJBW	2
		117MVVBY	2	117MKKBW	2
		117P06BW	2	117MLLBW	2
		117P07BW	2	117MMMBW	2
		117P08BW	2	117MNNBW	2
		117P13BW	2	117MOOBW	2
		103/15	60	117MPPBW	2
		121X/23	2	117MQQBW	2
		122X/23	2	117MRRBW	2
		124/15	2	117MSSBW	2
		130/23	20	117MTTBW	2
		130/30	20	117MUUBW	2
		140/15	20	117MVVBW	2
		140/30	20	117MWWBW	2
		160/25	1	117MXXBW	2
		161/25	1	117MYYBW	2
		175D/15	3	117MZZBW	2
		175E/15	3	117M10BW	2
		175L/15	3	117M11BW	2
		185G/20	3	117M12BW	2
		185M/20	3	117M13BW	2
		190/10	50	117M14BW	1
		190/15	50	117M29BW	2
		202/15	100	117M33BW	1
		301/15	10	117M999B	2
		302/15	10	117M999G	2
		303/30	10	117M999O	1
		304/30	10	117M999R	2
		710/07	40	117M999U	2
		710/10	40	117M999W	2
		710/15	40	117M999Y	2
		710/40	40	103/15	160
		710/60	20	102/15	80
		710/100	20	103/15	90
		808/15	40	108/15	40
		830/30	20	121/23	2
		840/15	20	122/30	2
				124/15	2
				140/15	20
				140/30	20
				160/25	1
				161/25	1
				190/05	50
				190/10	30
				190/15	30
				301/15	30
				302/15	30
				303/30	15
				304/30	15
				710/15	60
				710/25	60
				103/15	200
				105/15	150
				106/15	50
				130/30	30
				140/15	60
				140/30	30
				302/15	80
				303/30	15
				304/30	15
				710/15	60
				710/25	60
				710/07	50
				710/15	50
				710/25	50

#	mm	1
050...	350x80x250	1

TRASP SYSTEM

