

Radiation-based measurement

Source holder

Overview	204
Source holder	206

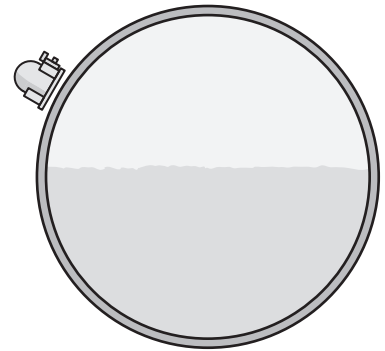


Source holder

Protective container for radioactive sources

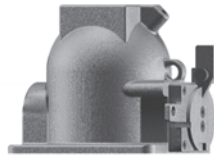
Measuring principle

The source holder consists of a cast iron housing filled with lead. It shields the environment against gamma rays and protects the radioactive source against mechanical damage or environmental influences. The rays can penetrate through a small slot focussed to the direction of the detector. This opening can be locked completely either manually, pneumatically or electrically. The source holder can be mounted on a flange.



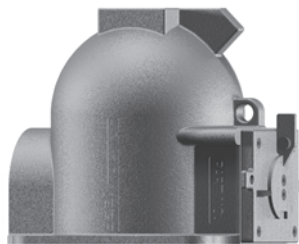
Overview

Source holder SHLD-1



Applications:	source holder for radioactive source capsule containment
Version:	epoxy powder coated cast steel or 316 stainless steel, fire-resistente: 30 minutes at 800 °C maximum activity Cs-137: 7.4 GBq (200 mCi)
Process fitting:	DN 120 PN 10
Weight:	30 kg

Source holder SHLD-2



Applications:	source holder for radioactive source capsule containment
Version:	epoxy powder coated cast steel or 316 stainless steel, fire-resistente: 30 minutes at 800 °C maximum activity Co-60: 7.4 GBq (200 mCi), Cs-137: 185 GBq (5 Ci)
Process fitting:	DN 150 PN 25
Weight:	90 kg



Source holder SHLD-1

Protective container for the radioactive isotopes

Application area

For shielding of radioactive sources such as Cs-137

Advantages

Best possible shielding with low container weight

Angle of reflection 0°, 15°, 30°, 45°, 60°

Fire-resistant 30 minutes at +800 °C

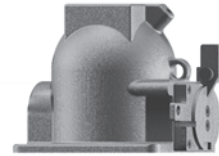
Simple exchange of the radioactive source

Optionally with pneumatical or electrical switching on and switching off

Function

The radioactive source with source holder SHLD-1 emits gamma rays.

The SHLD-1 is mounted to the vessel or pipeline, directly on the opposite side of the detector. The protective container shields the environment against the gamma rays and protects the radioactive isotope against mechanical or chemical damage. Two or more source holders are used with large measuring ranges.



basic price:

Source activity

- N000 No Source Capsule
- A001 1 mCi / 37 MBq (Cs-137)
- A002 2 mCi / 74 MBq (Cs-137)
- A005 5 mCi / 185 MBq (Cs-137)
- A010 10 mCi / 370 MBq (Cs-137)
- A020 20 mCi / 740 MBq (Cs-137)
- A030 30 mCi / 1.11 GBq (Cs-137)
- A050 50 mCi / 1.85 GBq (Cs-137)
- A100 100 mCi / 3.7 GBq (Cs-137)
- A200 200 mCi / 7.4 GBq (Cs-137)

Source Holder Construction

- A LCS w/Epoxy Powder Coating
- C 316L SS

Collimation Angle / Direction

- A 0°
- B 15° (horizontal down)
- C 30° (horizontal down)
- D 45° (horizontal down)
- E 60° (30° above and below horizontal)

Shutter control

- 1 Standard manual lever
- 2 Pneumatic actuator
- 3 Electric actuator (24 V DC)
- 5 Electric actuator (230 V AC/50 Hz)

End switch for indication switching conditiong (on/off)

- X Without

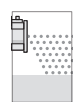
Interlock

- X Without

Additional equipment

- X Without

SHLD1.									
--------	--	--	--	--	--	--	--	--	--



Source holder SHLD-2

Protective container for the radioactive isotopes

Application area

For shielding of radioactive sources such as Cs-137 or Co-60

Advantages

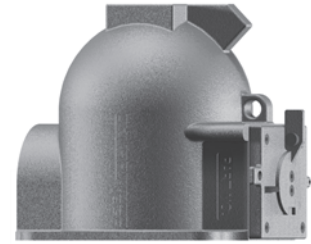
Best possible shielding with low container weight

Angle of reflection 0°, 15°, 30°, 45°, 60°

Fire-resistant 30 minutes at +800 °C

Simple exchange of the radioactive source

Optionally with pneumatical or electrical switching on and switching off



Function

The radioactive source with source holder SHLD-2 emits gamma rays.

The SHLD-2 is mounted to the vessel or pipeline, directly on the opposite side of the detector. The protective container shields the environment against the gamma rays and protects the radioactive isotope against mechanical or chemical damage. Two or more source holders are used with large measuring ranges.

basic price:

Source Activity Size

- N000 No Source Capsule
- A001 1 mCi / 37 MBq (Cs-137)
- A002 2 mCi / 74 MBq (Cs-137)
- A005 5 mCi / 185 MBq (Cs-137)
- A010 10 mCi / 370 MBq (Cs-137)
- A020 20 mCi / 740 MBq (Cs-137)
- A030 30 mCi / 1.11 GBq (Cs-137)
- A050 50 mCi / 1.85 GBq (Cs-137)
- A100 100 mCi / 3.7 GBq (Cs-137)
- A200 200 mCi / 7.4 GBq (Cs-137)
- A300 300 mCi / 11.1 GBq (Cs-137)
- A500 500 mCi / 18.5 GBq (Cs-137)
- B001 1 mCi / 37 MBq (Co-60)
- B002 2 mCi / 74 MBq (Co-60)
- B005 5 mCi / 185 MBq (Co-60)
- B010 10 mCi / 370 MBq (Co-60)
- B020 20 mCi / 740 MBq (Co-60)
- B050 50 mCi / 1.85 GBq (Co-60)

Source Holder Construction

- A LCS w/Epoxy Powder Coating
- C 316L SS

Collimation Angle / Direction

- A 0°
- B 15° (horizontal down)
- C 30° (horizontal down)
- D 45° (horizontal down)
- E 60° (30° above and below horizontal)

Shutter control

- 1 Standard manual lever
- 2 Pneumatic actuator
- 3 Electric actuator (24 V DC)
- 5 Electric actuator (230 V AC/50 Hz)

End switch for switching status indication (on/off)

- X Without

Interlock

- X Without

Additional equipment

- X Without

SHLD2.										
--------	--	--	--	--	--	--	--	--	--	--

