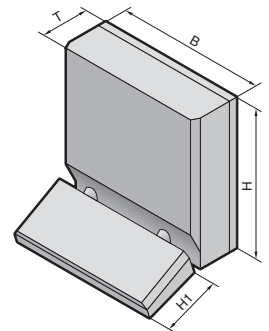
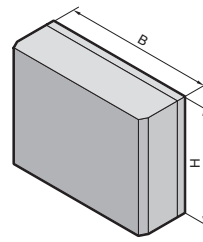


Premium Panel, protection category IP 69K



Stainless steel
B
1.6

Optionally with or without keyboard housing

- **Resistant to high-pressure cleaning** (protection category IP 69K). The seal lies between two surfaces and is ideally compressed by the screw fastening (see detailed drawing).
- **Suitable for clean room use.** Screw-fastening to comply with high standards in the food industry. With plastic stoppers on the inside or hex screws on the outside.

- **Optimum EMC conditions.** The labyrinth seal achieves a particularly high level of RF shielding of the enclosure.
- **Accessibility.** Internal rear panel bracket. This solution is clearly superior to external hinges from a hygiene point of view.
- **Handling.** Two duct connectors between the enclosures.

Material:
Stainless steel

Surface finish:
Brushed, grain 240

Protection category:
IP 69K to DIN 40 050-9

Property rights:
German patent no. 102 16 430

Clean room:
Air purity class 1 to DIN EN ISO 14 644-1

Detailed drawing,
see page 1222.

		Packs of	Premium Panel					
			with keyboard housing				without keyboard housing	
Model No. CP	1.4301 (AISI 304)	1	6680.000	6680.010	6680.100	6680.110	6681.000	6681.100
	1.4404 (AISI 316L)	1	6650.000¹⁾	6650.010¹⁾	6650.100¹⁾	6650.110¹⁾	6651.000¹⁾	6651.100¹⁾
Width (B) mm			530	530	530	530	530	530
Height mm	Operating housing (H)		460	460	460	460	360	360
	Keyboard housing (H1)		200	200	200	200	–	–
Depth mm	Operating housing (T)		120	120	220	220	120	220
	For installation panel W x H		482.6 mm (19") x 354.8 mm (8 U)				482.6 mm (19") x 310 mm (7 U)	
Installation depth mm	Operating housing		115	115	215	215	115	215
	Keyboard housing		front 58 rear 63	front 58 rear 63	front 58 rear 63	front 58 rear 63	–	–
Support arm connection			top	bottom	top	bottom	top, or bottom by rotating the enclosure	
Accessories								
Rear panel bracket		2	6682.000	6682.000	6682.000	6682.000	6682.000	6682.000

¹⁾ Delivery times available on request.



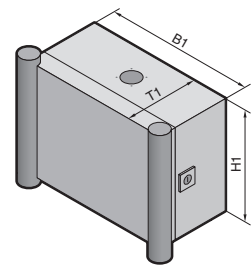
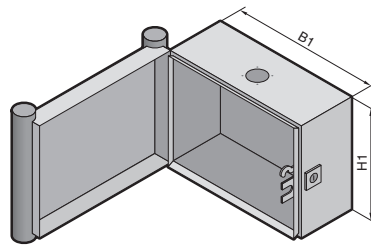
The **rear panel holder** holds the rear panel in an open position. Model No. see page 962.



Premium TFT 17"
Model No. see page 1133.

Stainless steel

Command Panel housing with door



1.6 B
Stainless steel

Material:

Enclosure and door:
Stainless steel
Handle strips: Plastic-approved for use with foodstuffs, similar to RAL 5002 (ultramarine blue).

Surface finish:

Brushed, grain 240

Protection category:

IP 66 to EN 60 529/09.2000

Supply includes:

Enclosure sealed all-round, with cut-out and reinforcement for support arm system, fastener with guide plate. Door with sealing frame and side handle strips. The support arm connection and door hinge may be swapped over by rotating the enclosure.



Rittal service:

Separate keyboard housing, other sizes, modified support arm connection or door hinge, drilled holes and cut-outs for switches and operator panels available on request.

Approvals,
see page 38.

Detailed drawing,
see page 1223.

Width (B1) mm	Packs of	300	400	400	600	Page
Height (H1) mm		300	300	400	400	
Depth (T1) mm		150	150	150	150	
Model No. CP	1.4301 (AISI 304)	1	6535.010	6536.010	6538.010	6539.010
	1.4404 (AISI 316L)	1	6535.510¹⁾	6536.510¹⁾	6538.510¹⁾	6539.510¹⁾
Weight kg		6.3	7.5	8.8	12.1	

Accessories

Matching mounting plate from AE	ID no.	1033.500	1030.500	1380.500	1039.500	128	
Support rails ²⁾ SZ	Model No. SZ	10	2316.000	2317.000	2317.000	2319.000	1002

Lock systems

Standard double-bit lock insert may be exchanged for 41 mm lock inserts, plastic handle and T handle, type C, see page 954 – 956.

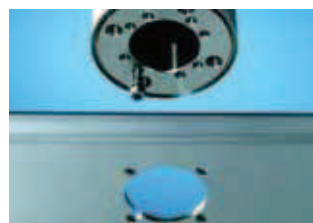
¹⁾ Delivery times available on request.

²⁾ Only with vertical attachment of punched rail 23 x 23 mm, see page 998.



Semi-cylinder lock

for retro-fitting to all stainless steel enclosures with cam lock. Model No. see page 957.



Enclosure attachment CP-S, stainless steel

with pre-fitted screw for locating. Model No. see page 314.



Support arm system CP-S, stainless steel

In conjunction with stainless steel Command Panels, terminal boxes 120 mm deep and compact enclosures AE from stainless steel, this support arm system is particularly well-suited for meeting high standards of corrosion protection and hygiene.

The tilting adaptor and enclosure coupling may optionally be mounted on the top or bottom of the enclosure. **They are not suitable for use as the base point of a system.** For this purpose, we recommend wall/base mountings, or with larger heights and widths, an additional pillar made of steel tubing or stainless steel (available on request).

Material:

Stainless steel 1.4305

Protection category:

IP 69K to DIN 40 050-9 (resistant to high-pressure cleaning)

Load information:

see page 237.



Support section CP-S, stainless steel

Attached to the connection components via 2 clamping screws.

Dimensions:

External diameter: 48.3 mm
Wall thickness: 3.6 mm

Material:

Stainless steel 1.4301 (AISI 304)

Surface finish:

Brushed, grain 240

Other sizes to order available on request.

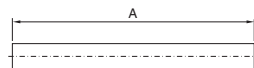
Order example:

U-shaped = CP 6660.200
Dimension A = 300 mm
Dimension B = 800 mm
Dimension C = 240 mm

The minimum dimensions must be adhered to, because of the bending radius and insertion depth of the enclosure attachment, housing coupling and wall/base mountings.

Straight

$A_{min.} = 100 \text{ mm}$,
 $A_{max.} = 2000 \text{ mm}$

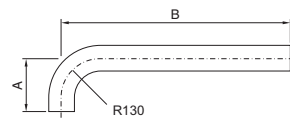


A mm	Weight kg	Model No. CP
500	2.0	6660.050
1000	3.9	6660.010
2000	7.8	6660.020
as per specifications A =	3.9 kg/m	6660.000¹⁾

¹⁾ Extended delivery times.

L-shaped

$A_{min.} = B_{min.} = 240 \text{ mm}$,
 $B_{max.} = 1500 \text{ mm}$

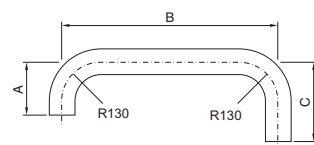


A mm	B mm	Weight kg	Model No. CP
240	500	2.6	6660.110
500	1000	5.5	6660.120
as per specifications A =	as per specifications B =	3.9 kg/m	6660.100¹⁾

¹⁾ Extended delivery times.

U-shaped

$A_{min.} = C_{min.} = 240 \text{ mm}$,
 $B_{min.} = 410 \text{ mm}$,
 $B_{max.} = 1500 \text{ mm}$



A mm	B mm	C mm	Weight kg	Model No. CP
240	800	800	6.6	6660.210²⁾ 6660.230³⁾
240	500	500	4.3	6660.220²⁾ 6660.240³⁾
as per specifications A =	as per specifications B =	as per specifications C =	3.9 kg/m	6660.200¹⁾²⁾ 6660.250¹⁾³⁾

¹⁾ Extended delivery times.
²⁾ Enclosure top-mounted
³⁾ Enclosure suspended

Stainless steel

Support arm system CP-S

1.6 B
Stainless steel



Tilting adaptor, 10° CP-S stainless steel

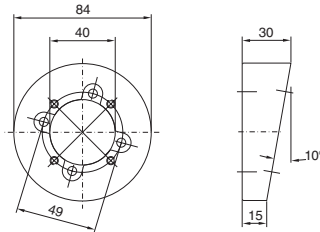
For mounting between the Command Panel and

- Enclosure attachment CP 6664.500 or
- Housing coupling CP 6664.000

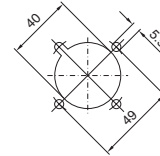
Material:
Stainless steel 1.4305

Weight kg	Model No. CP
0.7	6664.100

Supply includes:
Seal and assembly parts.



Mounting cut-out enclosure



Enclosure attachment CP-S, stainless steel

For rigid fastening of the enclosure to the support section.

Material:
Stainless steel 1.4305

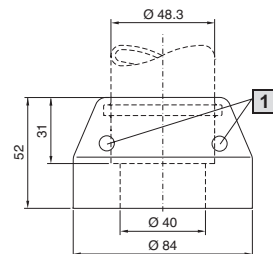
Supply includes:
Seals and 2 clamping screws for support section CP-S, stainless steel.

Note:
For assembly of a pedestal, modular, see page 317, 2 pieces are required.

Weight kg	Model No. CP
1.3	6664.500

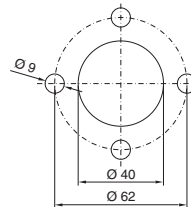
+ **Accessories:**

Enclosure reinforcement, see page 317.

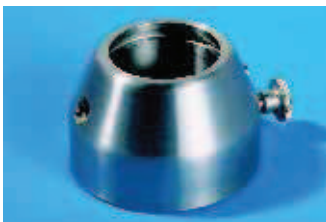
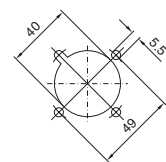


1 Clamping screw

Mounting cut-out for pedestal, bottom



Mounting cut-out, enclosure



Housing coupling CP-S stainless steel

For mounting on the vertical part of the support arm system.

Rotation range:
Approx. 350°, lockable via knurled screw.

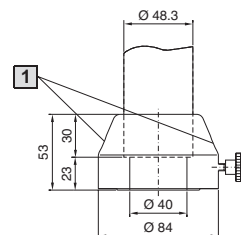
Material:
Stainless steel 1.4305

Supply includes:
Seals and 2 clamping screws for support section CP-S, stainless steel.

Weight kg	Model No. CP
1.1	6664.000

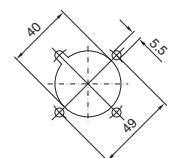
+ **Accessories:**

Enclosure reinforcement, see page 317.



1 Clamping screw

Mounting cut-out enclosure



Support arm system CP-S



Wall/base mounting, rigid, CP-S stainless steel

For attaching the support arm system to vertical or horizontal surfaces.

Material:

Stainless steel 1.4305

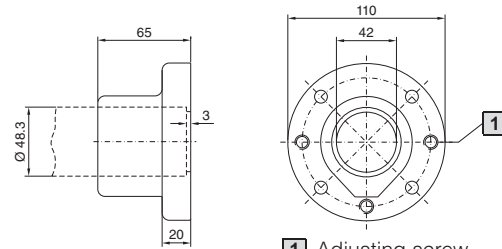
Supply includes:

Seals, 3 adjusting screws to compensate for any irregularities, and 2 clamping screws for support section CP-S, stainless steel.

Weight kg	Model No. CP
1.7	6663.000

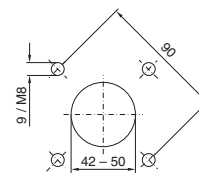
+ Accessories:

Wall consoles, see page 316.



1 Adjusting screw

Mounting cut-out



Swivel base mount, CP-S stainless steel

For external mounting on

- Horizontal surfaces (suspended or top-mounted)
- Wall console (CP 6663.500 only)

Rotation range:

Approx. 350°, lockable via knurled screw.

Material:

Stainless steel 1.4305

Supply includes:

Seals and 2 clamping screws for support section CP-S, stainless steel.

Note:

Rotation range may be limited in 60° increments using a limit plate, supplied loose.

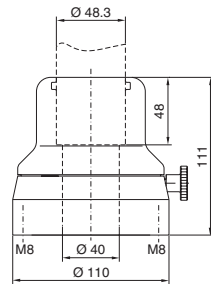
Attachment	Weight kg	Model No. CP
1 rear, M8 thread	3.9	6663.500
2 front, hole Ø 9 mm	4.5	6663.400

+ Accessories:

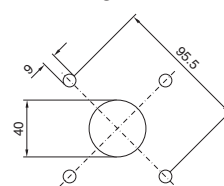
Wall consoles, see page 316.



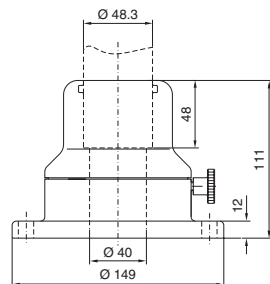
1 Rear attachment CP 6663.500



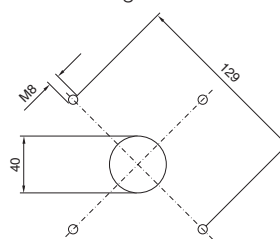
Mounting cut-out



2 Front attachment CP 6663.400



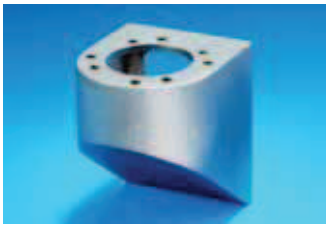
Mounting cut-out



Stainless steel

Support arm system CP-S

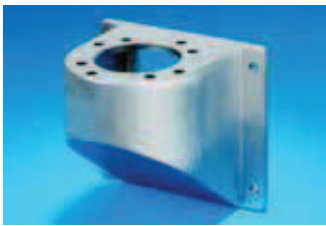
1.6 B
Stainless steel



1



1



2



2

Wall console CP-S stainless steel

With holes for mounting

- Base mount, swivel, CP-S (CP 6663.500), with 4 screws
- Wall/base mount, rigid, CP-S (CP 6663.000), with 4 screws and nuts.

Material:

Stainless steel 1.4301 (AISI 304)

Surface finish:

Brushed, grain 240

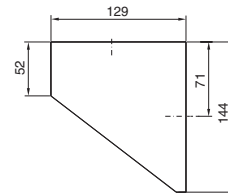
Supply includes:

Seals and assembly parts.

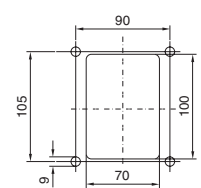
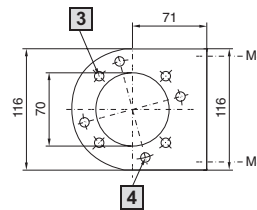
- 1 Rear attachment, M8 thread
- 2 Front, hole Ø 9 mm

Attachment	Weight kg	Model No. CP
rear, M8 thread	1.5	6665.000
front, hole Ø 9 mm	1.8	6665.500

Rear fastening

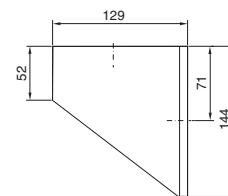


Mounting cut-out

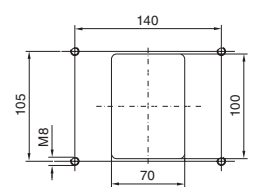
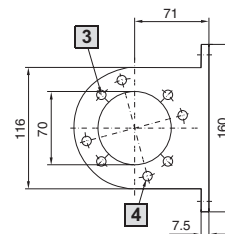


- 3 Hole for PG 6663.000
- 4 Hole for PG 6663.500

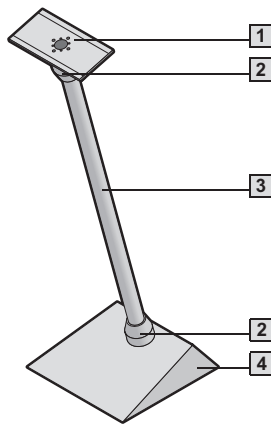
Front fastening



Mounting cut-out



- 3 Hole for PG 6663.000
- 4 Hole for PG 6663.500



Pedestal, modular, CP-S stainless steel

For the configuration of compact operating stations.

May be compiled from the following modules:	Model No. CP	Page
1 Enclosure reinforcement	6143.310	317
2 2 enclosure attachments top/bottom	6664.500	314
3 Support section, straight (may be shortened to required length by sawing)	500 mm	6660.050 313
	1000 mm	6660.010 313
	2000 mm	6660.020 313
4 Pedestal base plate, small	6143.300	317

Detailed drawing, see page 1223.



Enclosure reinforcement CP-S stainless steel

For external or internal reinforcement of stainless steel enclosures of a corresponding size. Smaller enclosures may also be mounted directly without a flange.

- For use with
- Enclosure attachment CP 6664.500
 - Housing coupling CP 6664.000

Material:
Stainless steel 1.4301 (AISI 304)

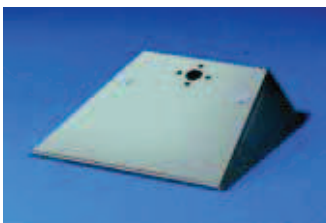
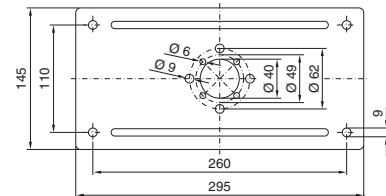
Surface finish:
Brushed

Supply includes:
Assembly parts for the enclosure and support section plus 2 seals.

Packs of	Model No. CP
1	6143.310

Accessories:

Enclosure attachment CP 6664.500, see page 314.
Housing coupling CP 6664.000, see page 314.



Pedestal base plate, small

With reinforcement bracket for assembling a support section via an enclosure attachment.

- With one hole at the rear for commercially available cable conduit gland M20.
- With two holes at the top (including sealing bung) for lower base attachment cross member.
- Prepared on the inside for a cable clamp DK 7077.000 or DK 7078.000 for strain relief.

Material:
Stainless steel 1.4301 (AISI 304)

Surface finish:
Brushed

Packs of	Model No. CP
1	6143.300

Supply includes:
Assembly parts for enclosure attachment plus seal.

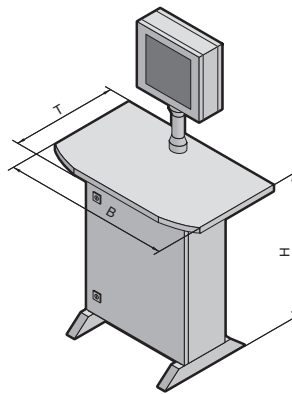
Note:
Commercially available screws up to M8 may be used for floor attachment.

Accessories:

Cable clamp DK 7077.000 or DK 7078.000, see page 1064.

Stainless steel

IW operating station



1.6
Stainless steel

Complete solution for use in areas where hygiene is important. All that is needed is a standard commercially available tower PC up to W/H/D: 220 x 530 x 600 mm (max. 20 kg) and a mouse.

Protection category:
IP 66 to EN 60 529/09.2000, complies with NEMA 4x.

! Also required:

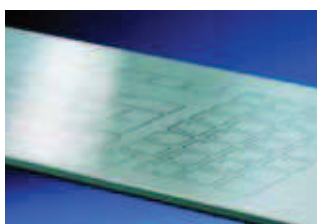
Connection cable for infeed, see page 1030.

Note:
Supplied unassembled. All components may also be ordered individually.

Detailed drawing,
see page 1224.

Delivery times available on request.

Width (B1) mm	Packs of	900	Page
Height (H1) mm		875	
Depth (T1) mm		600	
Model No. IW	1	6920.010	
Supply includes			
Enclosure for tower PC, stainless steel 1.4301 (AISI 304)			319
Worktop, stainless steel, prepared for stainless steel keyboard 482.6 mm (19")/4 U			319
Enclosure attachment CP-S, stainless steel			314
Support section CP-S, stainless steel, 500 mm long (may be shortened)			313
Housing coupling CP-S, stainless steel			314
Premium TFT 17", IP 69K			1133
Power pack for TFT			1134
Connection cable for power pack			1134
Cross-member, stainless steel			319
Stainless steel keyboard 482.6 mm (19")/4 U			1139
Lock systems			
Standard double-bit lock insert may be exchanged for 41 mm lock inserts, lock cylinder insert, plastic handle and T handles, type C, see page 954 – 956.			



Stainless steel keyboard
see page 1139.



Premium TFT 17"
see page 1133.

IW enclosure for tower PC



Compact, connection-ready enclosure for standard commercially available tower PCs, up to W/H/D: 220 x 530 x 600 mm (max. 20 kg). The rear interfaces of the PC are readily accessible with the door open.

Roof prepared for mounting

- worktop IW 6902.340/.350
- beneath surfaces

Base prepared for mounting

- cross-member IW 6902.050
- on surfaces

Material:

Enclosure:
Stainless steel 1.4301 (AISI 304),
brushed grain 240
Base for tower PC:
Sheet steel,
powder-coated in textured RAL 7015.

Protection category:

IP 66 to EN 60 529/09.2000, complies with NEMA 4x (if the openings in the enclosure are covered or sealed in accordance with the protection category).

Supply includes:

Enclosure sealed all round, r/h door hinge, with screw-fastened base on the inside of the tubular door frame to accommodate a tower PC, locked at the side with 2 fitted cam locks, retaining strap to secure the tower PC to the base.

Side panel right:

- With fitted socket strip with 3 sockets, overvoltage protection and interference suppressor filter on the inside.
- Hole for cable gland M20 supplied loose, brass, for cable entry.

Rear panel with cut-out for use of the connector gland SZ 2400.500, supplied loose,

Delivery times available on request.

Detailed drawing,

see page 1224.

	Enclosure for tower PC	Page
Width (B) mm	760	
Height (H) mm	760	
Depth (T) mm	300	
Model No. IW	6900.310	
Weight (kg)	53	

Accessories

Cross-member, stainless steel	6902.050	see below
Worktop, stainless steel, prepared for stainless steel keyboard	6902.340	see below
Worktop, stainless steel, solid	6902.350	see below

Lock systems

Standard double-bit lock insert may be exchanged for 41 mm lock inserts, lock cylinder insert, plastic handles and T handles, type C, see page 954 – 957.



Cross member, stainless steel

for IW 6900.310

To increase stability, the cross-member protrudes 120 mm in front of and behind the IW enclosure.

Material and surface finish:

Stainless steel, 1.4301 (AISI 304)
brushed, grain size 240

Detailed drawing,

see page 1224.

To fit	Packs of	Model No. IW
IW 6900.310	2	6902.050



Accessories:

Levelling feet SO 2859.000,
see page 907,
twin castors,
see page 907.



Worktop, stainless steel

For use in areas where enhanced hygiene is crucial.

Material/surface finish:

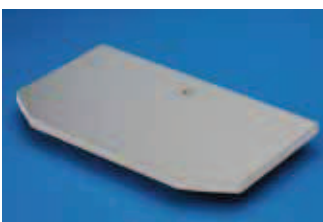
Chipboard, laminated on both sides with stainless steel film, 1.4301 (AISI 304), with tough stainless steel edge strip, brushed surface finish.

Note:

- Other sizes
- With drilled holes, recesses available upon request.

Detailed drawing,

see page 1224.



Worktop	Width mm	Height mm	Depth mm	Model No. IW
Prepared for stainless steel keyboard 482.6 mm (19")/4 U	900	38	600	6902.340
Solid				6902.350

Delivery times available on request.



Accessories:

Stainless steel keyboard 19"/4 U,
see page 1139,
support arm system CP-S, stainless steel,
see page 313 – 316.