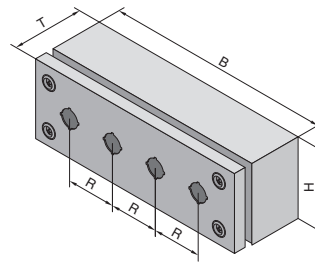


Stainless steel

Switch housing



1.6
Stainless steel

Switch housing

For the installation of switches and other command devices Ø 22.5 mm.

Benefits:

- Integral lid clip allows you to keep your hands free when wiring.
- Versatile attachment options: Screw fastening from the inside or outside, and via wall mounting brackets.
- Opening and closing the lid with quick-release fasteners (a three-quarter revolution is sufficient).

Material:

Stainless steel
Enclosure: 1.25 mm
Cover: 1.25 mm

Surface finish:

Enclosure and cover:
Brushed, grain 240

Protection category:

IP 66 to EN 60 529/09.2000,
complies with NEMA 4x.

Supply includes:

Enclosure,
lid with foamed-in seal and 2 or
4 quick-release fasteners.

Detailed drawing,
see page 1220.

Width (B) mm	Packs of	100	160	220	280	Page
Height (H) mm		100	100	100	100	
Depth (T) mm		90	90	90	90	
Model No. SM	1.4301 (AISI 304)	1	2384.010	2384.020	2384.030	2384.040
	1.4404 (AISI 316L)	1	2384.510¹⁾	2384.520¹⁾	2384.530¹⁾	2384.540¹⁾
Pitch pattern (R) mm		–	60	60	60	
No. of switch cut-outs		1	2	3	4	

Accessories

Wall mounting bracket	4	1594.000	1594.000	1594.000	1594.000	975
-----------------------	---	----------	----------	----------	----------	-----

¹⁾ Delivery times available on request.



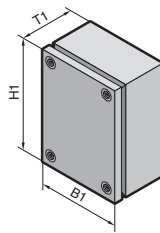
Cable glands

made from polyamide or brass.
Model No. see page 1054.



Integral lid clip

allows you to keep your hands
free when wiring.



Material:

Stainless steel
Enclosure: 1.25 mm
Cover: 1.25 mm

Surface finish:

Enclosure and cover:
Brushed, grain 180

Protection category:

IP 66 to EN 60 529/09.2000,
complies with NEMA 4x.

Supply includes:

Enclosure, cover with all-round
foamed-in PU-seal and quick-
action screws, including plastic
bushes.

Approvals,
see page 25.

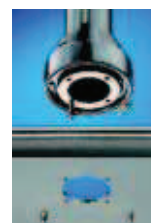
Detailed drawing,
see page 1175.

Width (B1) mm		Packs of	150	300	200	300	400	300	Page
Height (H1) mm			150	150	200	200	200	300	
Depth (T1) mm			80	80	80	80	120	120	
Model No. KL	1.4301 (AISI 304) with PU seal	1	1521.010	1522.010	1523.010	1524.010	1525.010	1526.010	
	1.4301 (AISI 304) with silicone seal	1	1521.020¹⁾	1522.020¹⁾	1523.020¹⁾	1524.020¹⁾	1525.020¹⁾	1526.020¹⁾	
	1.4404 (AISI 316L) with PU seal	1	1521.510¹⁾	1522.510¹⁾	1523.510¹⁾	1524.510¹⁾	1525.510¹⁾	1526.510¹⁾	
	1.4404 (AISI 316L) with silicone seal	1	1521.520¹⁾	1522.520¹⁾	1523.520¹⁾	1524.520¹⁾	1525.520¹⁾	1526.520¹⁾	
Weight (kg)			1.3	1.8	1.8	2.4	3.6	3.9	
Cover screws			4	4	4	4	4	4	
Accessories									
Mounting plate		1	1560.700	1561.700	1562.700	1563.700	1564.700	1567.700	978
Wall mounting bracket		4	1594.000	1594.000	1594.000	1594.000	1594.000	1594.000	975
Wall angle		1	2583.000	2583.000	2583.000	2583.000	2583.000	2583.000	976
Pole clamp		1	2584.000	2584.000	2584.000	2584.000	2584.000	2584.000	976
Support rails TS 35/7.5		10	2314.000	2316.000	2315.000	2316.000	2317.000	2316.000	1002
Cover hinge, stainless steel 1.4404		2	1592.010	1592.010	1592.010	1592.010	1592.010	1592.010	962
Pressure relief stopper		5	2459.500	2459.500	2459.500	2459.500	2459.500	2459.500	916

¹⁾ Delivery times available on request.



Wall mounting bracket
for secure attachment to the
wall.
Model No. see page 975.

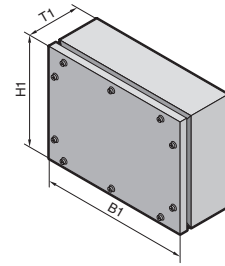


Housing coupling
for attaching the 120 mm deep
KL to the support arm system.
Model No. see page 314.

Stainless steel

Premium Line KL, protection category IP 69K

Stainless steel
1.6 B



The correct solution in cases where high-pressure cleaning is a priority.

- **Resistant to high-pressure cleaning** (protection category IP 69K). The seal lies between two surfaces and is optimally compressed by the screw fastening.
- **Suitable for clean room use.** Optional screw fastening to comply with high standards in the food industry:
 - 1 external with hex screws,
 - 2 internal with plastic bungs.

- **Optimum EMC conditions.** The labyrinth seal achieves a particularly high level of RF shielding of the enclosure.
- **Accessibility.** Internal rear panel bracket. This solution is clearly superior to external hinges from a hygiene point of view.
- Wall mounting can be implemented directly from the rear using M8 pull-in nuts, or from the front using wall mounting brackets.

Material:
Stainless steel, 1.5 mm

Surface finish:
Brushed, grain 240

Protection category:
IP 69K to DIN 40 050-9



Rittal service:

Other sizes and other enclosures with this sealing concept are available on request. Cut-outs and drilled holes to your specifications.

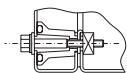
Detailed drawing, see page 1221.

Width (B1) mm	Packs of	150	150	300	400	Page
Height (H1) mm		150	150	200	300	
Depth (T1) mm		80	120	120	120	
Model No. KL	1.4301 (AISI 304)	1	1024.010	1024.020	1024.030	1024.040
	1.4404 (AISI 316L)	1	1024.510¹⁾	1024.520¹⁾	1024.530¹⁾	1024.540¹⁾
Number of lid screws		4	4	6	10	
Accessories						
Mounting plate	1	1024.910	1024.910	1024.920	1024.930	978
Wall mounting bracket	4	1594.000	1594.000	1594.000	1594.000	975
Wall angle	1	2583.000	2583.000	2583.000	2583.000	976
Rear panel bracket	2	6682.000	6682.000	6682.000	6682.000	962

¹⁾ Delivery times available on request.



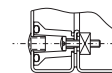
1



Depending on customer requirements, screw head on the outside . . .



2



. . . or plastic stoppers on the outside with concealed screws (included in the supply).